

OCTA Measure M2 Environmental Mitigation Program
Updated Acquisition Properties List (Biological Criteria)

Property Number	Property**	Geographic Area	Acreage	General Biological Characteristics			
1*	Aliso Canyon	Coastal	100	High quality habitat, heterogeneous habitat, very good connectivity/contiguity opportunities, larger sized properties, aligns with impacted habitats, contains covered species	Group 1		
15*	Irvine Mesa Corridor	Cleveland Nat'l Forest	669				
22	Ferber Ranch (OCTA Acquired)	Trabuco	399				
28	Hayashi (OCTA Acquired)	Brea	296				
103	St. Michael's Abbey	Cleveland Nat'l Forest	289.91				
105	MacPherson (OCTA Acquired)	Cleveland Nat'l Forest	203.64				
54	Mitchell Properties West	Trabuco	101.7				
56	O'Neill Oaks (OCTA Acquired)	Trabuco	119.18				
66	Saddle Creek South (OCTA Acquired)	Trabuco	83.65				
67	Saddleback Meadows	Trabuco	222				
68	Saddleback Valley Christian School	San Juan Capistrano	67.93				
79	Sky Ranch	Trabuco	526.87				
106	Takahashi (Baker Square LLC)	Cleveland Nat'l Forest	642				
82	The Hafen Estates	Trabuco	47.91				
93	Watson	Trabuco	98.32				
99	Canyon Crest	Chino Hills State Park	352.92			Group 1 (Removed from consideration by project sponsor)	
101	First Cornerstone Land LLC (Silverado Canyon LP)	Cleveland Nat'l Forest	229.13				
55	Newport-Banning Ranch	Coastal	402				
75	Shell-Aera (HOSEC)	Tonner Canyon	2935				
29 (75)*	Shell-Aera (HOSEC)	Tonner Canyon	300				
77	Siena Summit	Laguna Niguel	54				
95	West Coyote Hills	Fullerton	510				

* Properties are submitted and reviewed during 2011 Call for Acquisition Projects

** Properties are listed in alphabetical order within each group

() Denotes properties that were previously submitted and assigned a property number

**OCTA Measure M2 Environmental Mitigation Program
Updated Acquisition Properties List (Biological Criteria)**

Property Number	Property**	Geographic Area	Acreage	General Biological Characteristics	
6*	Chiquita Ridge	City of RSM	92	Good quality habitat, homogeneous habitat, good connectivity/contiguity opportunities, medium sized properties, contain some covered species	GROUP 2
18 (106)*	Ladd Canyon	Cleveland Nat'l Forest	78.8		
22*	MacPherson 3	Silverado Canyon	30		
25 (91)*	Rancho Van Thof	Trabuco Creek	15		
26*	Rio Santiago	Santiago Creek	110		
28 (68, 56)*	Saddleback (Potential package w/O'Neill Oaks)	Trabuco	249.19		
97	Adams	Cleveland Nat'l Forest	50.13		
16	Deer Canyon	SR-91	45		
54	Mitchell Properties East	Trabuco	40		
83	Thier Property 1	Trabuco	19.9		
84	Thier Property 2	Trabuco	78.6		
69	Saddleback Vineyards	Trabuco	99.29	GROUP 2 (Removed from consideration by project sponsor)	
98	Baczynski	Cleveland Nat'l Forest	71.68		
100	Dulac (LOPEZ)	Cleveland Nat'l Forest	56.1		
102	Gittelson (Bergman)	Cleveland Nat'l Forest	223.31		
104	Inter-American Investments	Chino Hills State Park	123.86		

* Properties are submitted and reviewed during 2011 Call for Acquisition Projects

** Properties are listed in alphabetical order within each group

() Denotes properties that were previously submitted and assigned a property number

**OCTA Measure M2 Environmental Mitigation Program
Updated Acquisition Properties List (Biological Criteria)**

Property Number	Property**	Geographic Area	Acreage	General Biological Characteristics	
7*	Collins Property	Modjeska Canyon	30	Lower quality habitat, lower connectivity/contiguity potential, smaller properties, highly disturbed	GROUP 3
8 (14)*	Davis Property	Laguna Canyon	5.68		
11 (29)*	Heiderali Property	Laguna Canyon	38		
12*	Hunt Trust	Modjeska Canyon	10		
16*	Johnson Property	Modjeska Canyon	6		
19*	Madariaga Property	Harding Canyon	8.21		
33*	Trabuco Highlands (The Banana Property)	City of RSM	28.75		
1	100-Acre Lowlands (aka Hellman Properties LLC)		100		
7	Cheyne		7.48		
14	Davis		6		
17	Diemer		9		
18	Domanskis		10		
20	Edwards Thumb		59.75		
23	Frost		60		
25	Goodell		6.22		
29	Heiderali		38		
32	Hospital		7.8		
33	Hsiao Williams		73.3		
34	Hunter		10		
37	Juarez		7.65		
41	Lavendar Lane (aka Lag Beach Preserve, Anacapa)		56		
42	Leckey		18		
45	Lorch		16.54		
53	Mehdi		22		
62	Powell		2.66		
63	Rosenbaum		2.4		
71	San Juan Villas		9.21		
73	Shea (Bolsa Chica)		50		
76	Shuff		18		
107	Valencia		8.49		
91	Van Thof		13.14		
92	Ventanas		5.3		
94	Wells Fargo/Earhar		12.3		

* Properties are submitted and reviewed during 2011 Call for Acquisition Projects

** Properties are listed in alphabetical order within each group

() Denotes properties that were previously submitted and assigned a property number

**OCTA Measure M2 Environmental Mitigation Program
Updated Acquisition Properties List (Biological Criteria)**

Property Number	Property**	Geographic Area	Acreage	General Biological Characteristics
13*	Hunt Trust II	Modjeska Canyon	4.721	Typically very small habitat, highly disturbed, some do not align with freeway habitats
17*	Khanbolooki Property	Modjeska Canyon	1.26	
20*	MacPherson 1	Cleveland Nat'l Forest	1+	
21*	MacPherson 2	Cleveland Nat'l Forest	1.5+	
23 (52)*	McGraw Property	Laguna Canyon	2	
24*	Norman Property	Modjeska Canyon	.25	
27*	Rose Canyon	City of RSM	4.7	
31*	Sunny Hills Church of Christ	Fullerton	2.4	
32*	Temple Property	Modjeska Canyon	1+	
36*	Zadeshi Property	Modjeska Canyon	1.73	
4	Baca Park		14.34	
5	Beach and Bay Mobile Homes		2.85	
11	Collen		2	
12	Crystal Cathedral		162.3	
26	Harden		1	
30	Hollingsworth		5	
31	Holocek		2	
40	Lake Forest		16. 8, 10.9,13.7	
44	Little Church Int'l		1.5	
46	Los Alisos Parcel 1		20.41	
47	Los Alisos Parcel 2		48.73	
48	Los Alisos Parcel 3		7.1	
51	Mazzie		3	
52	McGraw		2	
61	Peric		5	
70	Salinas		4	
72	Schroeder		5.02	
81	Summit Drive		0.12	
85	Trail Property 1		20.05	
86	Trail Property 2		15.27	
87	Tustin Branch (Middle)		11.48	
88	Tustin Branch (North)		2 linear miles	
96	Winner		2.14	

GROUP 4

* Properties are submitted and reviewed during 2011 Call for Acquisition Projects

** Properties are listed in alphabetical order within each group

() Denotes properties that were previously submitted and assigned a property number

OCTA Measure M2 Environmental Mitigation Program
Updated Acquisition Properties List (Biological Criteria)

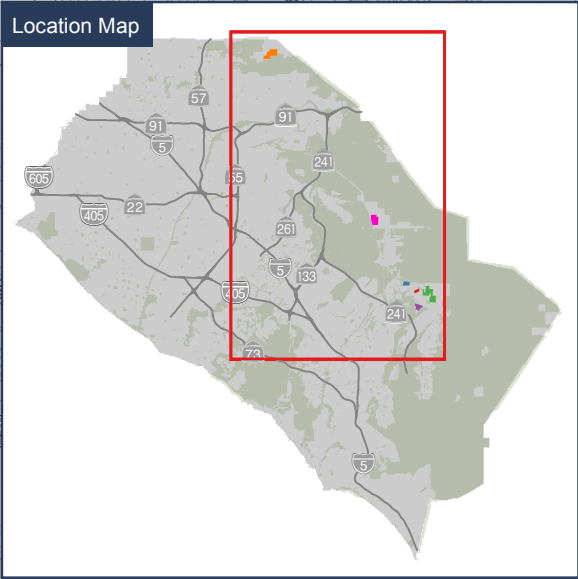
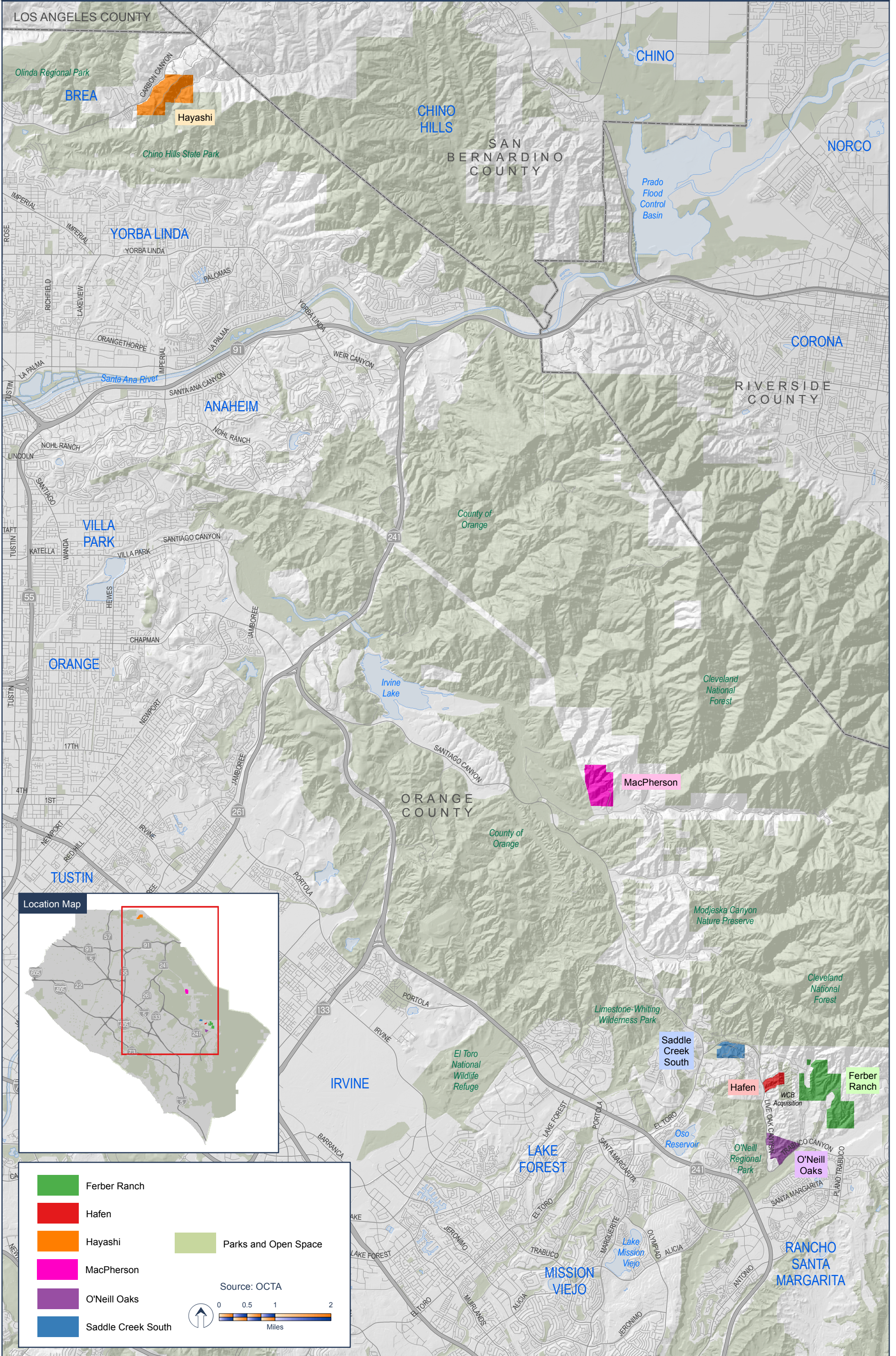
Property Number	Property**	Geographic Area	Acreage	General Biological Characteristics
2*	Alley Property	Modjeska Canyon	9.89	Owner did not respond to 1.26.2011 OCTA letter confirming participation
3*	Appel Property	Modjeska Canyon	2.67	
5*	Chi Property	Modjeska Canyon	60	
9*	Ellis Property	Modjeska Canyon	1.5	
10*	Goldberg Property	Santiago Creek	20	
14*	Hutton Properties	Santiago Canyon	40	
34*	Townsend Property	Modjeska Canyon	1.2	
4 (55)*	Banning Ranch	Coastal	412	Removed by project sponsor
30*	Shepston Property	Silverado Canyon	1.2	
35 (95)*	West Coyote Hills	Fullerton	510	
19	Driftwood Restoration		20	Will be evaluated as part of Restoration Properties
24	Goeden Co.		4.3	Outside of PCA and Removed by Project Sponsor
50	Lyon Homes		14.28	
78	SJD Properties		12.32	
58	Pacific Triangle Management		96	In PCA and Removed by Project Sponsor
64	Royale Capistrano		25	








* Properties are submitted and reviewed during 2011 Call for Acquisition Projects

** Properties are listed in alphabetical order within each group

() Denotes properties that were previously submitted and assigned a property number

Acquisition Properties



	Ferber Ranch		Parks and Open Space
	Hafen		
	Hayashi		
	MacPherson		
	O'Neill Oaks		
	Saddle Creek South		

Source: OCTA

0 0.5 1 2
Miles